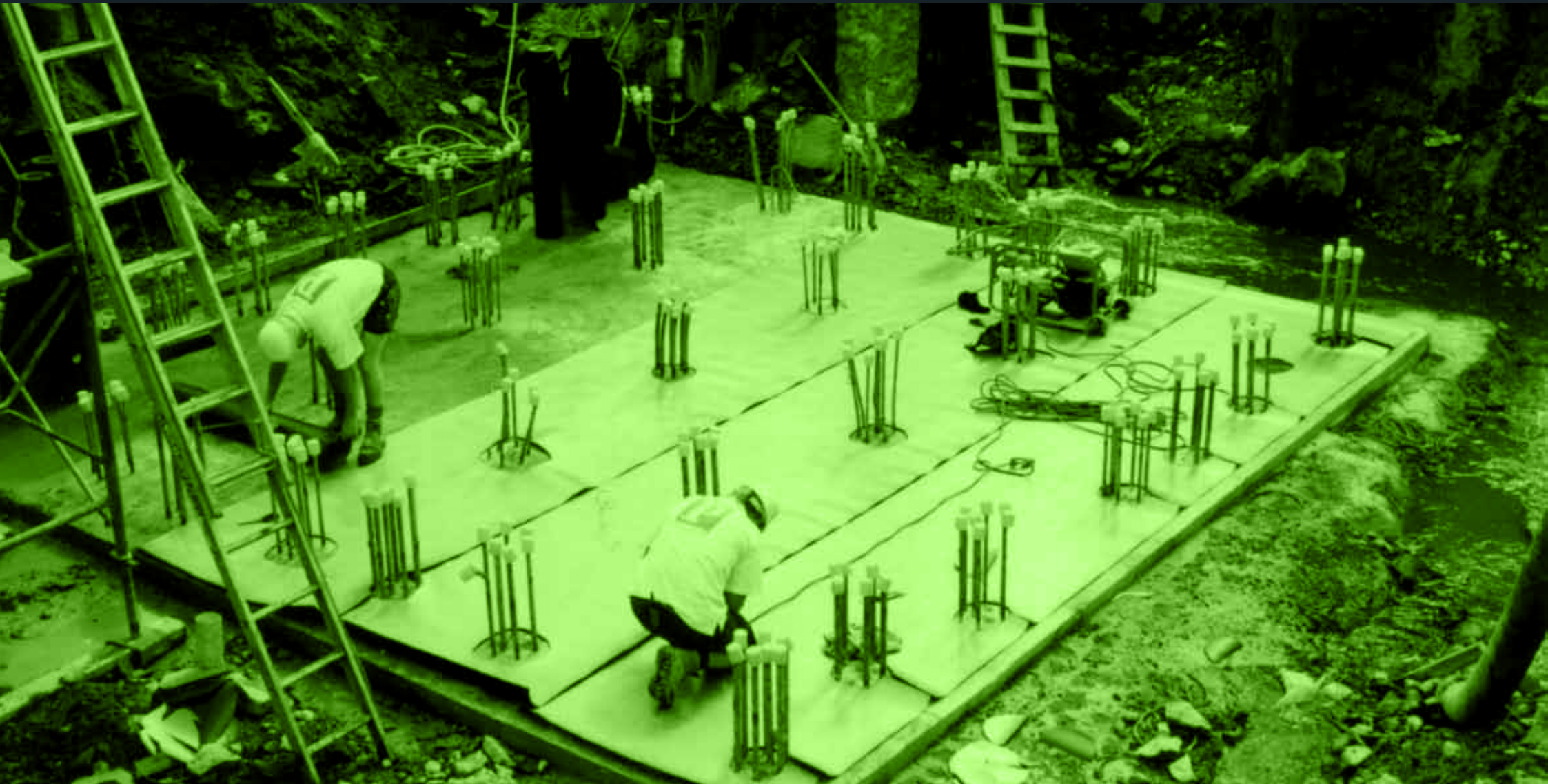




POLYSEAL



“A CUSTOMER IS THE MOST IMPORTANT VISITOR ON OUR PREMISES. HE IS NOT DEPENDENT ON US. WE ARE DEPENDENT ON HIM. HE IS NOT AN INTERRUPTION OF OUR WORK. HE IS THE PURPOSE OF IT. HE IS NOT AN OUTSIDER TO OUR BUSINESS. HE IS PART OF IT. WE ARE NOT DOING HIM A FAVOUR BY SERVING HIM. HE IS DOING US A FAVOUR BY GIVING US THE OPPORTUNITY TO DO SO”

MAHATMA GHANDI

contents

Our Mission	4
Our History	5
Our Clients	6
Our People	7
Occupational Health & Safety Policy	8
Enviromental Policy	9
Quality Statement	10
Our Accreditations	11
Services	13
Portfolio	
Civial Infrastructure	18
Commercial	20
Retail	22
Residential	24
Our Vision	26
Contact Details	27

our mission

TO ENDEAVOUR
TO ACHIEVE
A BALANCE
BETWEEN
COMMERCIAL
SUCCESS AND
PERSONAL
HARMONY.

To strive to achieve the well-being of those dependent on, or in contact with our organisation.

To ensure that all our people are culturally aware, non-discriminatory and always conscious of their safety and the safety of others.

To maintain an honest and equitable relationship with our people and our customers.

To relentlessly strive for improvement in our chosen fields of endeavour.

our history

THE POLYSEAL GROUP HAS, SINCE ITS INCEPTION IN 1989, PROVIDED SPECIALIST SERVICES TO THE CONSTRUCTION INDUSTRY, BUILDING OWNERS AND OPERATORS AND INFRASTRUCTURE PROVIDERS.

From a background in waterproofing new and existing structures using a variety of materials and techniques, Polyseal has grown its repertoire to include a wide range of activities including concrete repair works, carbon fibre and other forms of structural strengthening, cathodic protection and prevention, jointing, coating application to steelwork and concrete structures, epoxy flooring, fire service upgrades, pile wrapping, rail line reinstatement and re-grouting, minor civil works and associated general construction.

The varied nature of our specialist services has exposed our people to all major industry sectors including major construction, infrastructure, and mining and has enabled us to develop expertise in the use of a wide range of construction products and chemicals.

We maintain global alliances with materials suppliers to enable us to source the most suitable products for our customer's needs and to bring the benefits of international research to bear in our local markets.

our clients

Polyseal Group commenced business as a waterproofing specialist working for Australia's leading first and second tier construction companies and we have maintained and developed these relationships during our 22 years of operation. Polyseal Group remains the preferred choice of many of those customers.

Over time, Polyseal Group has developed capabilities in a wide range of specialist fields and many building, asset and infrastructure owners now call Polyseal Group for our expertise in those areas. With the value of key assets constantly increasing, customers recognise that Polyseal Group add value by providing relevant advice and solutions to their building and infrastructure problems that take into account their operational and strategic requirements.

With offices, infrastructure and resources in Sydney, Melbourne, Brisbane and Perth Polyseal Group is uniquely situated to provide a nationwide and cohesive service to national and local customers alike.

ABI GROUP
AECOM
BECTON
BROOKFIELD MULTIPLEX
BAULDERSTONE
BUILT
COCKRAM
FKP
GANELLEN
GROCON
HACER
HICKORY
HUTCHINSON BUILDERS
HYDER CONSULTING
JOHN HOLLAND
KELL&RIGBY
LAING O'ROURKE
LEND LEASE
MIRVAC
THIESS
RIO TINTO COAL AUSTRALIA
WESTFIELD

our people

Our position as a leading provider of specialist construction services has enabled us to draw together a management team that includes the best people in the waterproofing and remedial building industries, a team that is highly knowledgeable, motivated and skilled in operating in demanding markets and environments.

Graham Athanaseris
Group Managing Director

Ritson Bentley
National Technical Manager
Waterproofing & Coatings

Brendan Walsh
National Technical Manager
Remedial Works

Michael Hogan
Chief Estimator
Remedial Works

Radhika Rajan
Chief Financial Officer

Sam Argyropoulos
State Manager
New South Wales

Luke Macdonald
Project Manager
Queensland

Louie Perri
State Manager
Victoria

Kimble Marfleet
Regional Manager
Western Australia

occupational health & safety policy

SAFETY IS THE RESPONSIBILITY OF ALL POLYSEAL EMPLOYEES WHO MUST ENSURE THAT THEIR JOBS ARE CARRIED OUT SAFELY WITHOUT CAUSING RISK TO THEMSELVES, THEIR COLLEAGUES, CUSTOMERS OR THE COMMUNITY.

Polyseal is committed to providing and maintaining a safe and healthy environment for our employees, contractors, clients and visitors to our workplaces. Our policies and procedures are written to comply with the relevant Australian Standard.

Polyseal is committed to:

- Ensuring compliance to OH&S legislation as relevant to our business
- Implementation of our OH&S procedures across the business
- Providing our employees with the necessary tools and training to maintain a safe work environment
- Providing adequate supervision at our workplaces
- Investigation and reporting of all incidents so that systems and procedures can be modified as required to improve the work environment
- Promoting a culture of 'Safety First' in business.

enviromental policy

OUR POLICY
ENSURES THE
IMPLEMENTATION
OF PLANS AND
PROCEDURES
ACROSS THE
GROUP TO
REDUCE OUR
IMPACT ON THE
ENVIRONMENT.

Polyseal is a leading service provider to the construction industry. We are committed to the implementation of construction methods that benefit the environment in which we live and work.

As a group we commit to:

- Maintaining compliance with relevant statutory regulations and environmental standards
- Implementation of project specific environmental plans
- Strive for best practice to achieve ecological and resource sustainability
- Implement best practice for waste management and pollution control procedures
- Encourage environmentally friendly recycling
- Use of materials where possible that have low impact on the environment
- Continual training of personnel on environmental policy standards and procedures
- Continually review and update our company procedures to reflect current best practice

quality statement

POLYSEAL GROUP
IS COMMITTED
TO PROVIDE OUR
CUSTOMERS WITH
PROFESSIONAL
SERVICE AND
A QUALITY
PRODUCT
INSTALLATION

Our purpose is to install products to satisfy the needs of our customers. We continually monitor our supplied products and strive to improve our services. The products used by Polyseal are chosen for their combination of superior performance and track record.

Our quality processes are designed to ensure the maintenance of the product quality through evaluation, inspection and verification processes at all stages of installation.

We are committed to comply with customer and statutory requirements and are committed to continual improvement of our quality management system in order to achieve a level of quality that enhances our reputation with our customers.

This level of quality assurance is achieved through a system of procedures that reflect our confidence and competence in our chosen fields. Our on and off site QA systems and training are designed to ensure that projects are delivered according to the specification and our customer's performance expectations.

We ensure that quality assurance is built into our processes and ensure that each individual employee is responsible for the quality of their work and takes pride in achieving a quality outcome

our accreditations

Polyseal is a member of the International Concrete Repair Institute and the only waterproofing industry member of the Defect Minimisation and Construction Research Project, a collaborative research project being undertaken by the University of New South Wales.

Polyseal enjoys approved applicator status with many leading national and international construction chemical and product manufacturers, including:

ARDEX
BOSTIK
DULUX
ORICA
BASF CONSTRUCTION CHEMICALS
PARCHEM CONSTRUCTION SUPPLIES
SIKA
TREMCO
WATTYL
WATERPROOFING TECHNOLOGIES ENVIRO
XYPEX

A close-up photograph of several green grass blades. The blades are covered in numerous small, clear water droplets, some of which are larger and more prominent. The background is a soft, out-of-focus green, suggesting a natural outdoor setting. The overall tone is fresh and vibrant.

**our
services**

Flooring

Polyseal offer a range of flooring alternatives that can be applied to your workplace. Depending on the alternative chosen, Polyseal Group can offer solutions that can be applied overnight or during a shutdown period minimising disruption to your workspace.

Products offered include:

- Polyurethane
- Polyurea
- Methacrylate
- Epoxy
- Polymer Concrete Flooring and Lining solutions.

Project Specific Outcomes Include:

- Polished Concrete
- Abrasive Blasting
- Non slip surfaces
- Chemical resistant Flooring
- Line Marking
- Coloured Flooring
- Impact resistant Coatings
- Dust proofing
- Hygienic Floors for food preparation areas
- Rectification of uneven surfaces. Creation of falls
- Rectification of damp areas

Jointing

All buildings have joints that need some form of treatment.

Typical types of joints include:

- Construction Joints
- Expansion Joints
- Fire Rated Joints
- Seismic Joints
- Bridge / Road Joints

Polyseal's experience with waterproofing techniques has led to an understanding of joints, their unique characteristics and the best way to treat them.

A well designed and installed jointing system, using materials such as Combiflex and Tricosal, will provide a waterproofing solution that will result in waterproof joints over the required design life.

Strict building regulations also call for Concrete slab and wall joints at vertical and horizontal surfaces to be fire rated and certified to minimise the risk of the spread of fire.

Road and bridge joints are designed for extremes in movement, environment and durability. Typically made of up a flexible joint with a steel plate cover for protection, it is important that the system is integrated into the structure to ensure a watertight system. Shopping Centre car parks and associated infrastructure are areas of typical application.

Waterproofing

Polyseal specialises in the application of waterproof membranes and associated products on new and existing buildings.

Specific project requirements will determine membrane selection. Membrane types range from multi-layer bitumen torch on systems, to liquid systems applied with a roller or sprayed systems that can be touch dry in less than 30 seconds and can be applied at a daily productivity of up to 1000m².

Correct selection of membrane will ensure a long lasting & durable product that will meet the client's design requirements.

Areas of application include:

- Podium Decks
- Balconies
- Retaining walls / Basement Walls
- Internal Wet Areas
- Roof Decks
- Green Roofs
- Carparks
- Tunnels
- Tanks – Potable water, Sprinkler, Blackwater
- Bridge Decks
- Walkways

Protective Coatings

Appropriately chosen and well applied protective coatings assist greatly in maximising the service life and maintenance return period of infrastructure assets. Deterioration of concrete, steel and timber structures can lead to expensive repairs and downtime. Protective coatings provide an effective preventative maintenance measure that reduces costs in both respects. Polyseal are familiar with a range of protective coatings designed to suit specific requirements. Working closely with our suppliers, Polyseal is able to offer the most appropriate solution for your project.

Protective coatings are typically applied to:

- Structural Steel
- External Concrete
- Steel or Concrete Piers
- Timber Structures
- Structures in a Marine Environment
- Miscellaneous Metalwork Items

As is the case with many occupied buildings, the renewal of coatings must be undertaken with minimal disruption to the customer's everyday activities. Our experience and dedicated management team will ensure that any project carried out will be pre-planned to ensure minimal disruption.

Concrete Repair & Protection

Australia's harsh natural and man-made environments provide mechanisms that attack concrete structures continually. From our residential buildings in coastal locations, to industrial and mining infrastructure in remote areas, Polyseal provide solutions and systems to assist asset owners to maintain and rehabilitate structures based on operational and budgetary requirements. Services offered include:

- Patch repairs using proprietary repair systems
- 'Micro-concrete' or 'pea gravel' concrete repairs to larger horizontal or vertical repair locations.
- Shotcrete repairs to large scale deteriorated areas.
- Removal and replacement of highly deteriorated structural elements.
- Hydro-demolition.
- Installation of sacrificial anode systems to ensure greater longevity of all of the above repair types.
- Installation of spray applied sacrificial anode coatings.
- Installation of zinc sheet anode systems.
- Design and installation of impressed current cathodic protection systems.
- Application of penetrating coatings such as silanes, siloxanes and migrating corrosion inhibitors.
- Crack injection systems for waterproofing and structural purposes including polyurethane and epoxy systems, rapid set cementitious systems, crystalline waterproofing systems.
- Epoxy coatings and linings.
- Pile jackets and pile wrapping.
- Magnesite removal and repairs.

Structural Strengthening

Refurbishment and the change of use of structures and buildings, often introduces greater applied loads, or changes in the design load path. Structural strengthening is also often required as structures deteriorate over time due to corrosion of metallic, timber or concrete elements.

Modern strengthening methods use proven materials that offer less creep and elongation than steel and are less obtrusive, being thinner and lighter, yet offering up to ten times the tensile strength capacity of steel.

Strengthening methods include:

- Use of carbon fibre, aramid or glass fibre fabrics such as the MBrace System by BASF or the Carbodur range by Sika.
- Use of carbon fibre laminates.
- Increasing tensile strength characteristics on structures such as bridges, wharves, car park floor slabs, silos etc. using a combination of conventional and externally bonded fibre reinforcement systems.
- Reinforcement of areas where penetrations are to be made through existing floor slabs for example to install new stairs, escalators or the like
- Plate bonding systems whereby steel plates are bonded to existing structures using epoxy adhesives.

Building Repair & Refurbishment

Australia's largely coastal building stock suffers deterioration due to the marine environment on a daily basis. Also Building practices of the distant and not so distant past have provided buildings with inherent defects and problems that require rectification. The need to upgrade or maintain the value of property investments also provides a driving force for the repair and refurbishment of buildings and infrastructure.

Polyseal offer a wide variety of services in this area and are able to handle the most complex of repair and refurbishment projects. These services include:

- Major waterproofing rectifications of both internal and external wet areas.
- Replacement of windows and doors in timber, aluminium and steel.
- Brickwork repairs including arch bar replacements, retro-fitting wall ties, crack repair and stabilisation, installation of slip joints and expansion joints.
- Cavity flashing and damp-proof course installation
- Balustrade removal and replacement to raised public spaces and balconies.
- Roofing and re-roofing in tiles, sheet metal and other proprietary systems.
- Internal refurbishment of hallways, foyers, stairwells and other common areas.
- Repair and refurbishment of swimming pools encompassing concrete repair to substructures, waterproofing and tiling.

Fire Safety Upgrades

The modern day requirements imposed by the Building Code of Australia in terms of fire safety, whilst stringent, are designed to safeguard the occupants of all buildings in the event of fire. These days any approval application for construction work is likely to be reviewed by the Local Authority for compliance with fire safety criteria.

Polyseal offer a wide ranging service to assist building owners with fire safety upgrades that includes:

- Fire separation works including fire rated walls and ceilings.
- Fire sealing using fire rated collars, pillows and sealants.
- Installation of fire rated doors and windows.
- Upgrades of fire hydraulic systems such as sprinklers, hydrants, fire hose reels and portable fire extinguishers.
- Installation of smoke and fire detection and alarm systems.
- Emergency lighting and signage.

Grouting

When completing infrastructure projects in the face of demanding deadlines the grouting of machinery and rail mounting baseplates is often overlooked as being a critical factor in ensuring minimal maintenance in the future. Cracked or dislodged grout is often visible on facilities that have been in operation for periods of less than twelve months. The correct choice and detailing of grout in these areas is essential in order to avoid costly repairs and, worse still, the attendant down time of essential plant and equipment.

Polyseal offer expertise in the design and installation of grouted support systems using the latest in:

- Dry pack grouts.
- Hydraulic cement grouts
- Epoxy grouts
- Non shrink grouts

Civil Infrastructure



Project Name: Energy Australia Learning Centre NSW
Client: Brookfield Multiplex
Budget: \$1.25 Million
Completion: 2010

Project Name: Sydney International Airport T1 Departures Project
Client: Lend Lease
Budget: \$450,000
Completion: 2009



Project Name: Parramatta Justice Precinct - Childrens Court NSW
 Client: Brookfield Multiplex
 Budget: \$950,000
 Completion: 2008

Project Name: Fiona Stanley Hospital WA
 Client: Brookfield Multiplex
 Budget: \$15 Million
 Completion: 2013

Commercial



Project Name: Star City Casino & Hotel NSW
Client: Brookfield Multiplex
Budget: \$2.8 Million
Completion: 2011

Project Name: Luna Park NSW
Client: Brookfield Multiplex
Budget: \$680,000
Completion: 2005



Project Name: Macquarie University Hospital NSW
 Client: Baulderstone
 Budget: \$1.4 Million
 Completion: 2010

Project Name: Royal Children's Hospital VIC
 Client: Lend Lease
 Budget: \$2.2 Million
 Completion: 2011

Retail



Project Name: Westfield Bondi Junction NSW
Client: Westfield
Budget: \$950,000
Completion: 2009

Project Name: Westfield Centrepoint Tower NSW
Client: Westfield
Budget: \$670,000
Completion: 2012



Project Name: Chatswood Rail Link
Client: Laing O'Rourke
Budget: \$400,000
Completion: 2008

Project Name: Multiple Sites NSW
Client: Clarke Energy
Budget: \$120,000
Completion: 2011

Residential



Project Name: One East Melbourne VIC
Client: Becton
Budget: \$165,000
Completion: 2010



Project Name: Stonecutters, Jacksons Landing NSW
Client: Lend Lease
Budget: \$400,000
Completion: 2009



Project Name: Highview Apartments VIC
 Client: Hickory Developments
 Budget: \$120,000
 Completion: 2010

Project Name: Sugardock, Jacksons Landing NSW
 Client: Lend Lease
 Budget: \$420,000
 Completion: 2010

our vision

To continue to be in the forefront of our chosen fields and to deliver projects, products and services to clients that exceed their expectations and demands.

To continue to embrace, understand and develop new materials and technologies as well as new markets.

To continue to reinforce the outlook of unity for mutual benefit, and well-being, with our customers, our people and our suppliers.

To continue to provide a safe and harmonious workplace for our people, and to continue to reduce our impact on the local and global environment

Sydney

Level 1 305 Princes Highway St Peters NSW 2044 Australia
telephone +61 2 8595 8600 **fax** +61 2 8595 866
contact Sam Argyropoulos 0419 424 889

Melbourne

33 Strong Street, Thomastown VIC 3074 Australia
telephone +61 3 9460 1331 **fax** +61 3 9460 1312
contact Louie Perri 0407 915 282

Perth

Unit 1, 45 Howson Way Bibra Lake WA 6163
telephone +61 8 9418 1079 **fax** +61 8 9434 6753
contact Ritson Bentley 0420 559 776

Brisbane

Unit 3, 28 Burnside Road, Yatala QLD 4207
telephone +61 7 3386 1171 **fax** +61 7 3386 1302
contact Luke Macdonald 0414 202 404



POLYSEAL

www.polyseal.com.au